



## Used Machines

Experience with future: lasting value through original Supfina quality.

Superfinishing attachment

**Supfina 291**

# Superfinishing Attachment 291-M

For workpieces with dimensions  $\varnothing$  10-80mm,  
Superfinishing of valve ball, joint balls, pump piston.

Machine type

Supfina 291

Machine No.

30016101

Technical data

Spindle speed: 0-2800 U/min

Spring deflection working head: 10mm

Weight: 20kg

Operating voltage: 230V/50Hz

Manufactured in

2012

Condition

Technical Quality – very good

Optical Quality – light traces of use

Location

Germany

Warranty

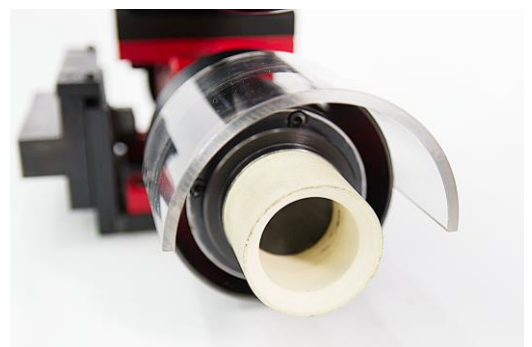
12 months

Price

On request, FCA Wolfach

Available

now



The images shown are for illustration only and might include chargeable options.



Supfina Grieshaber GmbH & Co. KG  
Schmelzegrün 7 · 77709 Wolfach / Germany  
Phone +49 7834 866-0 · Fax +49 7834 866-200  
info@supfina.com · www.supfina.com